



62a Harvey Avenue Netley SA

2 1 1

Superbly located and ideal for those downsizing, first home buyers or investors.

Open plan kitchen/family opening onto an outdoor alfresco great for entertaining indoors and outdoors.

2 good sized bedrooms, main with walk-in robe and 2nd with built-in robe, both accessing lovely big 2-way bathroom.

Garage and parking for a second vehicle.

This property will sell in a very attractive price range located ideally between the city and sea close to transport shops and schools.

A rare & unique opportunity indeed in an affordable price

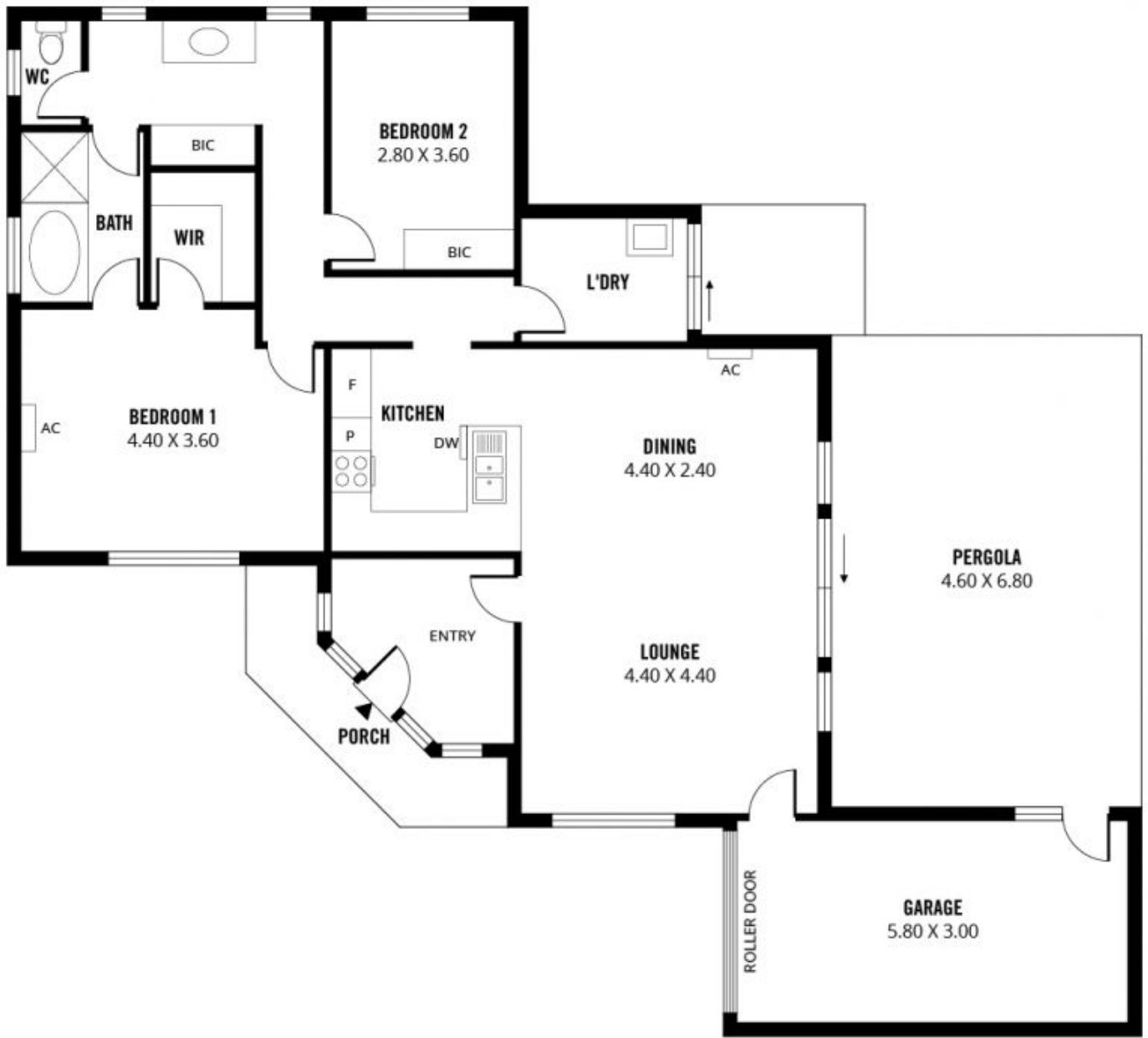
Building Size : 166 sqm
View : <https://www.taplin.com.au/sale/sa/western-beachside-suburbs/netley/residential/house/6576537>



Lynette McMahon
08 8295 4104



Phil McMahon
08 8295 4104



Scale in metres. This drawing is for illustration purposes only. All measurements are approximate and details intended to be relied upon should be independently verified.

Produced by **The Fotobase Group**