

104-106 Gilles Street Adelaide SA

Torrens Titled Versatile 2 levels - Occupy

Located between Pulteney St & King William St with Pulteney Grammar across the road, this is an enviable location.

Offices or work from home and live in this quite spacious 2 storey building or build new premises to suit.

Recently used as 6 office spaces for a sustainability advisory company with equal to 6 main rooms full kitchen with small courtyard, 3 toilets/Male & Female separate, one full bathroom and separate laundry, downstairs floor to ceiling glass windows (Northern Aspect) overlooking courtyard garden with gate access to rear lane.

Large upstairs balcony 7.0m x 2.67m and private rear

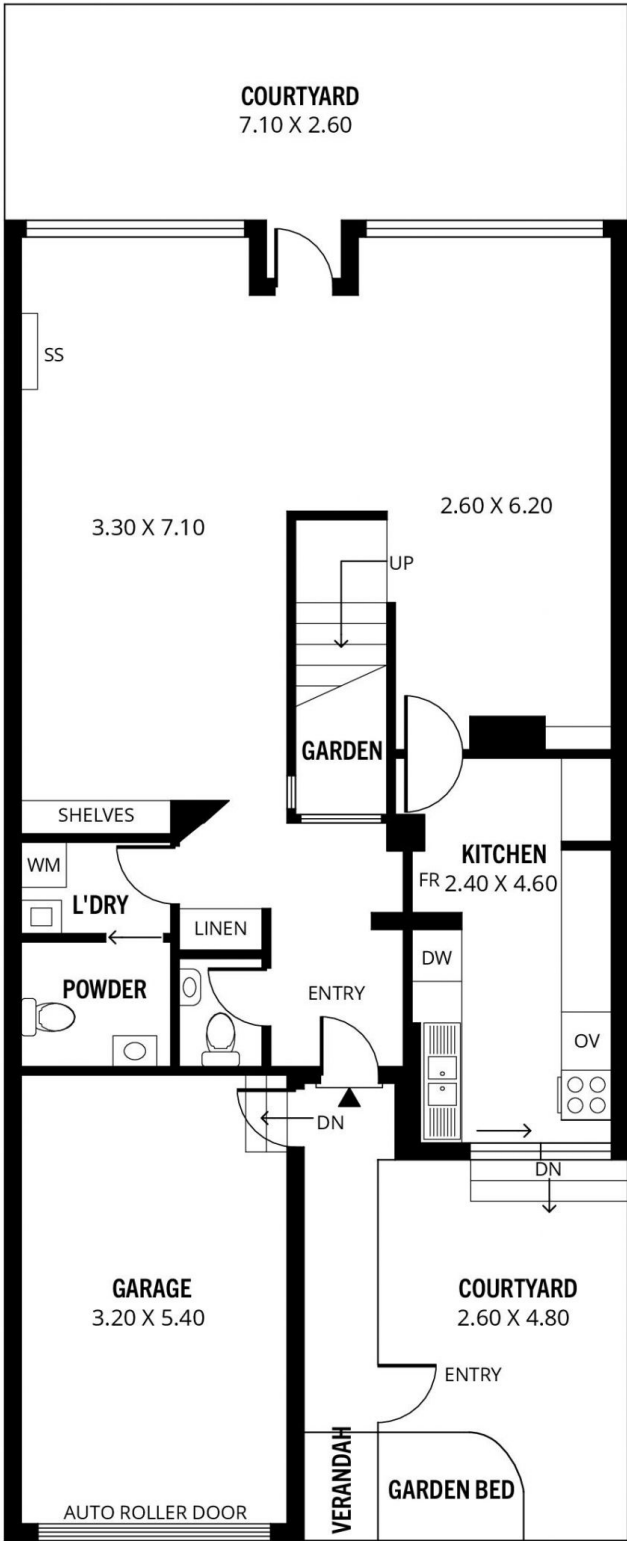
Building Size : 210 sqm
Land Size : 139 sqm
View : <https://www.taplin.com.au/sale/sa/adelaide/adelaide/commercial/offices/6489826>



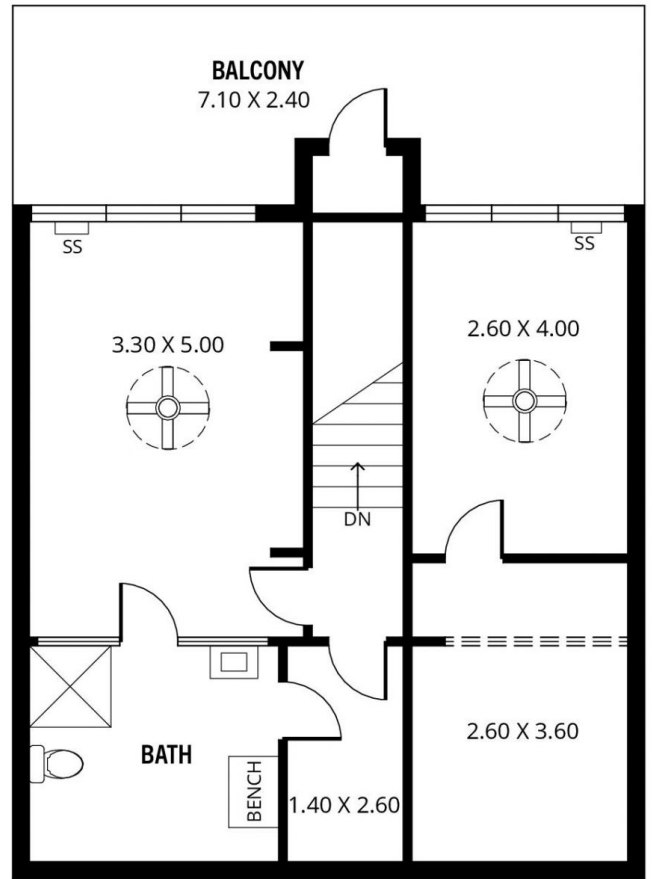
Lynette McMahon
08 8295 4104



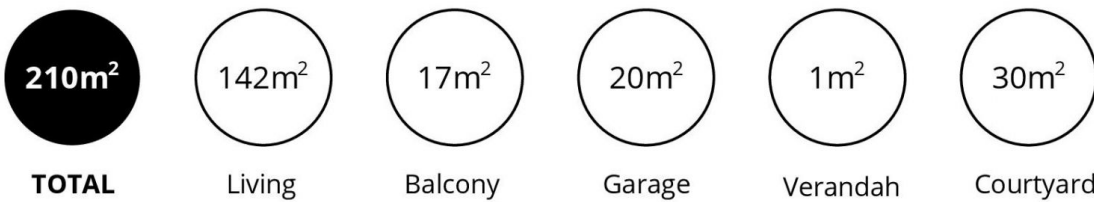
Phil McMahon
08 8295 4104



GROUND FLOOR



FIRST FLOOR



Scale in metres. This drawing is for illustration purposes only. All measurements are approximate and details intended to be relied upon should be independently verified.