

8 & 9/59 Fullarton Road Kent Town SA

Outstanding opportunity to purchase this well maintained and modern strata titled professional office accommodation with 4 secure off street carpark spaces. With a leafy outlook and located on the first floor, this amazing office space of approximately 125m² is perfect for small professional businesses or similarly perfect for the savvy investor.

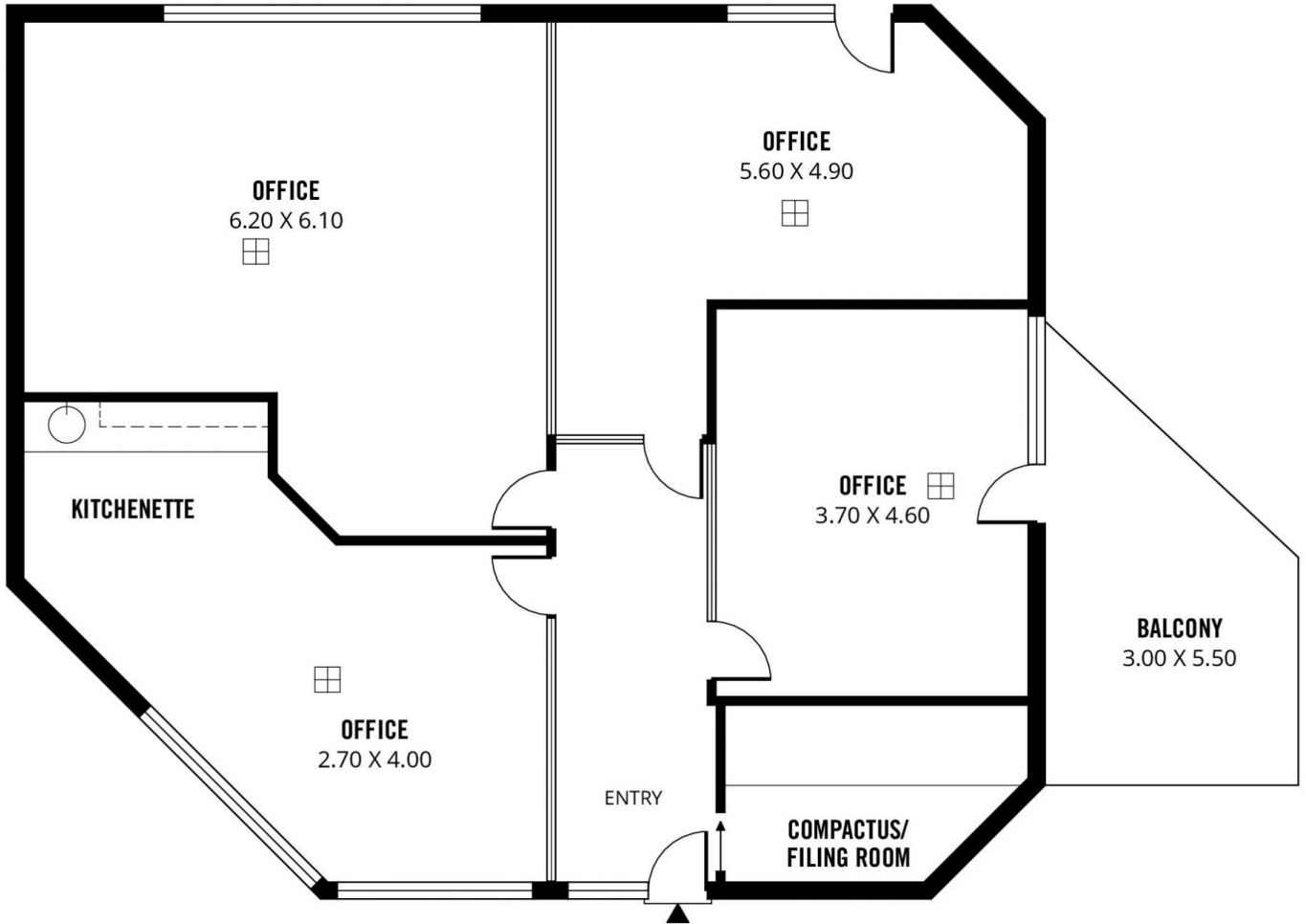
The spacious floor plan comprises of 3 main office spaces, kitchenette/breakout room and filing room complete with compactuses.

Known as units 8 and 9, this amazing listing is so close to the CBD with a few short minutes commute. Also superbly positioned nearby to the Cosmopolitan retail and food precinct of The Parade, Norwood, Adelaide's East End, transport and much much more.

Building Size : 125 sqm
View : <https://www.taplin.com.au/sale/sa/eastern-suburbs/kent-town/commercial/offices/6488122>



Heath Laphorne
08 8295 4104



Scale in metres. This drawing is for illustration purposes only. All measurements are approximate and details intended to be relied upon should be independently verified.

Produced by **The Fotobase Group**