



25/2 Tarlton Street Somerton Park SA

2 1 1

Enter from Yarrum Grove off the Esplanade

Walk to the beach & Broadway Cafe from this fabulous 2 bedroom apartment/unit. Only metres to the beautiful Somerton Park and Glenelg South beaches.

Enjoy the ambience of the trees and the quiet locality of being in a no through road. Relax and enjoy the peaceful view, or walk along the boardwalk, or beach to Jetty Rd Glenelg, or walk South to Jetty Rd Brighton.

The position is superb with your car parked almost at the front door.

A wonderful opportunity to own this delightful spacious unit of 2 large bedrooms full bathroom with separate bath & shower.

Building Size : 80 sqm

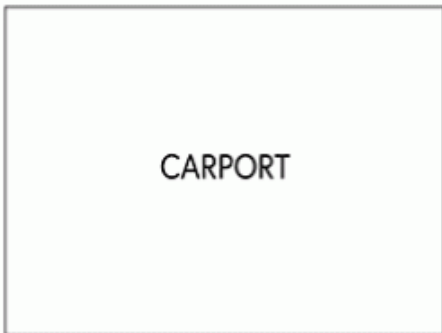
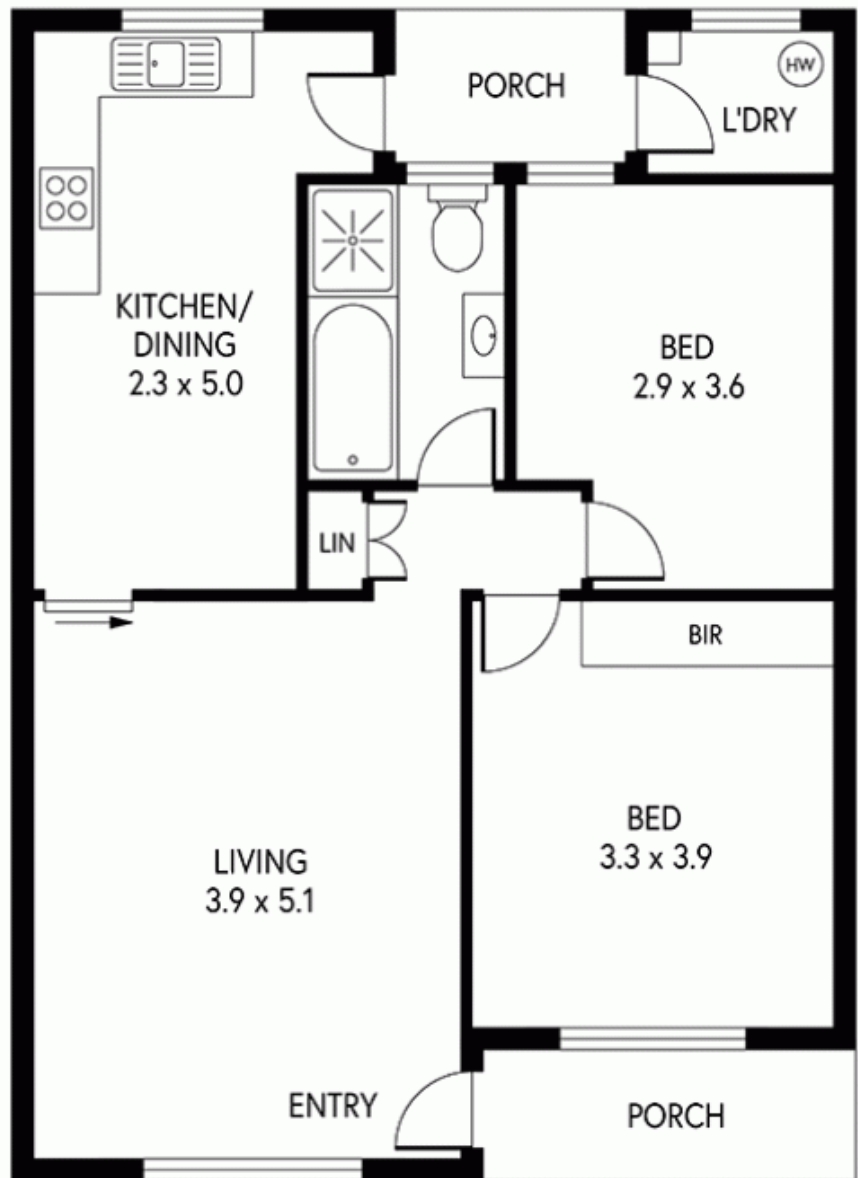
View : <https://www.taplin.com.au/sale/sa/western-beachside-suburbs/somerton-park/residential/unit/6448188>



Lynette McMahon
08 8295 4104



Phil McMahon
08 8295 4104



25/2 TARLTON STREET, SOMERTON PARK

INTERNAL - 63.0 SQM
 EXTERNAL - 19.0 SQM
 TOTAL - 82.0 SQM

PRODUCED BY CLIQUECREATIVE